

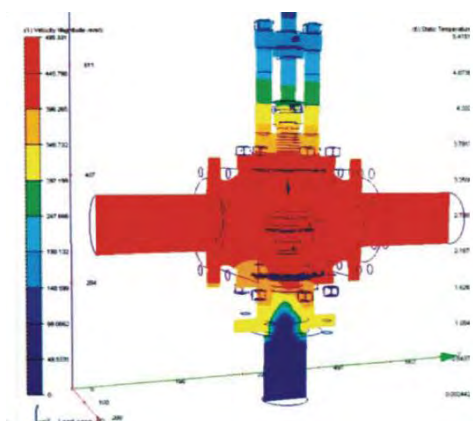
Industrial Valves



Our valve manufacturing facility has integrated R&D, manufacturing and marketing; with advanced ERP management system and a valve R&D centre. Therefore, we are strong in the areas of research and development in 3D molding design, finite element analysis, and transferring to CAD/CAM.

The facility covers a land area of 78000m² including 52000m² of buildings, and consists of its own foundry, machining workshops, welding heat treatment, assembly and testing, laboratory for physical and chemical analysis. It is well equipped with advanced processing and testing equipment, such as CNC machining centres, plasma spraying welding machines, CNC large sized spherical equipment, physical and chemical analysis equipment, NDE equipment, automatic painting line, etc.

The main products include gate valves, globe valves, check valves, ball valves, butterfly valves & plug valves as well as blind valves, blow-off valves, metallurgy valves and other various non-standard valves. Main materials include carbon steel, stainless steel, duplex stainless steel, Monel, Inconel, Hastelloy, Alloy 20, Bronze, Titanium, etc., with nominal diameter from 1/2" to 40" (DN15 to 3500mm), and pressure rating from 150lb to 4500lb. Our products are widely used in the fields of petrochemical, chemical, natural gas, water treatment, marine service, power generation service, thermo solar, metallurgy etc.



Manufacturing Equipment



Quality Control

We pride ourselves on our modern quality inspection and testing centre, which is equipped with material testing facilities for chemical analysis, spectral analysis, metallographic analysis, mechanical testing, impact testing etc., as well as flaw detection equipment and special processes, such as X-ray detection, ultrasonic detection, magnetic powder detection, dye penetrant detection etc., and advanced testing facilities such as an ultrasonic thickness tester, hardness tester, infrared thermometer, torque spanner etc., and performance testing equipment of pressure test bench, life tester etc., for finished valves with large and medium-sizes, to ensure 100% acceptability of products.



Our Quality Commitment

Our products are manufactured with advanced techniques from superior materials, meeting contract requirements regarding quality and specification. With correct installation, normal operation and maintenance, the performance of the products is guaranteed during the service life.

All products undergo strict inspection upon completion and are tested according to contract provisions to ensure 100% acceptance. Our warranty duration is 12 months after qualified installation for valves (except for products with special working conditions and/or special requirements).

Technical & After-Sales Support

Detailed technical information is provided for customers upon request. During the installation and adjustment of products, top-ranking technical service is available to customers at any time, including necessary technical documents and drawings, training for operation & maintenance etc., to ensure the successful operation, testing and inspection of products by our customers.

Application	Valve Type	
 <p>Petrochemical Services</p>		
 <p>Natural Gas Division</p>	Gate Valve	Bolted Bonnet Cast Steel Gate Valve Stainless Steel Gate Valve Forged Steel Gate Valve Pressure Sealed bonnet Cast Steel Gate Valve Parallel Gate Valve(Slab gate) Parallel Gate Valve(Expanding gate)
 <p>Environmental & Water Division</p>	Globe Valve	Bolted Bonnet Cast Steel Globe Valve Forged Steel Globe Valve Pressure Sealed bonnet Cast Steel Globe Valve
 <p>Marine Services</p>	Check Valve	Bolted Bonnet Swing type Check Valve Forged Steel Piston Check Valve Forged Steel Swing Check Valve Pressure Sealed bonnet Swing type Check Valve Dual plate check valve Single plate check valve
 <p>Power Services</p>	Ball Valve	Soft Seal Floating Ball Valve(1-pc or 2-pc) Soft Seal Trunnion Mounted Ball Valve(2-pc or 3-pc) Hard Seal Floating Ball Valve(1-pc or 2-pc) Hard Seal Trunnion Mounted Ball Valve(2-pc or 3-pc) Top Entry Trunnion Mounted Ball Valve Full welded Trunnion Mounted Ball Valve Orbit ball valve Small size cast steel ball valve Small size Forged steel ball valve
	Butterfly Valve	Concentric resilient seated butterfly valve Eccentric butterfly valve Double Eccentric butterfly valve Triple Eccentric butterfly valve
	Plug Valve	Sleeve type soft sealing plug valve Lubricated taper plug valve Pressure balance lubricated plug valve Lifting type plug valve

GATE VALVE

Bolted bonnet cast steel gate valve

Products Range

Design	API600 API603
Size	1-1/2" ~48"
Rating	ASME 150Lb~1500Lb

Design Feature

- > Bolted bonnet
- > Flexible wedge
- > Threaded or welded seat
- > One piece or two pieces yoke
- > Optional bellow sealed design



Pressure sealed bonnet cast steel gate valve

Products Range

Design	ASME B16.34
Size	3" ~36"
Rating	ASME 600Lb~2500Lb

Design Feature

- > Pressure sealed bonnet
- > Flexible wedge
- > Hard seating surface
- > Optional by-pass design



Parallel disc gate valve

Products Range

Design	API 6D
Size	1" ~48"
Rating	ASME 150Lb~2500Lb

Design Feature

- > Fire safe design
- > Double sleeve sealed
- > Slab-gate or expanding-gate
- > Double block & bleed
- > Self cavity relief
- > Emergency sealant injection



GLOBE VALVE



Bolted bonnet cast steel globe valve

Products Range

Design	ASME B16.34, BS 1873
Size	1-1/2" ~24"
Rating	ASME 150Lb~1500Lb

Design Feature

- > Bolted bonnet
- > Flat seal or conical seal
- > Threaded or welded seat
- > Optional bellow sealed design



Pressure sealed bonnet cast steel globe valve

Products Range

Design	ASME B16.34
Size	3" ~12"
Rating	ASME 600Lb~1500Lb

Design Feature

- > Pressure sealed bonnet
- > Flat seal or conical seal
- > Hard seating surface
- > Optional by-pass design

CHECK VALVE

Bolted bonnet cast steel swing type check valve

Products Range

Design	ASME B16.34, BS1868
Size	1-1/2" ~36"
Rating	ASME 150Lb~2500Lb

Design Feature

- > Bolted bonnet
- > Optional outside lever
- > Threaded or welded seat



Pressure sealed bonnet cast steel swing type check valve

Products Range

Design	ASME B16.34
Size	2" ~30"
Rating	ASME 600Lb~2500Lb

Design Feature

- > Pressure sealed bonnet
- > Optional outside lever
- > Hard seating surface
- > Threaded or welded seat

Wafer type check valve

Products Range

Design	API594, API6D
Size	2" ~60"
Rating	ASME 150Lb~2500Lb

Design Feature

- > Cast steel or forged steel type body
- > Dual plate or single plate design
- > Spring loaded disc
- > Light weight & compact design



SMALL SIZE FORGED STEEL VALVE



Small size forged steel gate valve



Small size forged steel
Y type globe valve

Small size forged steel valve (gate\globe\check)

Products Range

Design	API 602
Size	1/4" ~2-1/2"
Rating	ASME 150Lb~2500Lb, ASME 800Lb

Design Feature

- > Bolted or welded bonnet
- > Solid wedge(gate valve)
- > Plug disc or needle disc (globe valve)
- > Swing or lift type check (check valve)
- > Full port or reduced port



Small size forged steel globe valve



Small size forged steel check valve

BALL VALVE

Floating ball valve

Products Range

Design	BS5351, API608
Size	1/2" ~8"
Rating	ASME 150Lb~600Lb

Design Feature

- > Full port or reduced port
- > 1-pc or 2-pc body
- > Soft seal or metal seated design
- > Fire safe design
- > Anti-static
- > Blowout-proof stem
- > Optional locking device



Trunnion mounted ball valve

Products Range

Design	API6D
Size	2" ~60"
Rating	ASME 150Lb~2500Lb

Design Feature

- > Full port or reduced port
- > 2-pc or 3-pc body
- > Soft seal or metal seated design
- > Double block & bleed
- > Self cavity relief
- > Fire safe design
- > Anti-static
- > Blowout-proof stem
- > Emergency sealant injection

Top entry ball valve

Products Range

Design	API6D
Size	2" ~48"
Rating	ASME 150Lb~2500Lb

Design Feature

- > Full port or reduced port
- > Double block & bleed
- > Self cavity relief
- > Fire safe design
- > Anti-static
- > Blowout-proof stem
- > Emergency sealant injection
- > Optional double piston design



BALL VALVE



Full welded ball valve

Products Range

Design	API6D
Size	2" ~48"
Rating	ASME 150Lb~2500Lb

Design Feature

- > Full port or reduced port
- > Double block & bleed
- > Self cavity relief
- > Fire safe design
- > Anti-static
- > Blowout-proof stem
- > Optional double piston design
- > Optional underground extended stem

Orbit ball valve

Products Range

Design	API6D
Size	2" ~24"
Rating	ASME 150Lb~2500Lb

Design Feature

- > Full port or reduced port
- > Frictionless sealing structure
- > Fire safe structure
- > Anti-static structure



Small size cast steel ball valve

Products Range

Design	BS5351
Size	3/8" ~4"
Rating	150Lb~300Lb

Design Feature

- > Full port or reduced port
- > 1-pc, 2-pc, 3-pc body
- > Fire safe design
- > Anti-static
- > Blowout-proof stem
- > Optional locking device



Small size forged steel ball valve

Products Range

Design	BS5351
Size	1/4" ~1-1/2"
Rating	ASME 800Lb, ASME 600Lb~1500Lb

Design Feature

- > Full port or reduced port
- > 3-pc body
- > Fire safe design
- > Anti-static
- > Blowout-proof stem
- > Optional locking device



BUTTERFLY VALVE / CRYOGENIC VALVE

Concentric resilient seated butterfly valve

Products Range

Design	API609 MSS SP-67.68
Size	2" ~64"
Rating	ASME 125Lb, ASME 150Lb, ASME 250Lb

Design Feature

- > Concentric design
- > Low torque design
- > Blowout-proof stem
- > Bidirectional service
- > Self cleaning



Eccentric butterfly valve

Products Range

Design	API609 MSS SP-67.68
Size	2" ~60"
Rating	ASME 150Lb~600Lb

Design Feature

- > Optional eccentric structure
- > Soft or metal seated design
- > Optional fire safe design
- > Zero leakage performance
- > Blowout-proof stem

Cryogenic valve

Products Range

Type	Gate, Globe, Check, Ball, Butterfly
Design	ASME B16.34
Size	1/2" ~24"
Rating	ASME 150Lb~600Lb

Design Feature

- > Vent hole on upstream side
- > Extended bonnet
- > Low emission packing
- > Optional anti-static design



PLUG VALVE



Sleeve type soft sealing plug valve

Products Range

Design	API6D
Size	1/2" ~18"
Rating	ASME 150 Lb ~900 Lb

Design Feature

- > 2-way or 3-way bore type
- > Optional bore pattern (venturi, regular, short, standard)
- > Fully lined or sleeve type sealing
- > Bidirectional service
- > Self cleaning
- > Zero leakage performance

Lubricated taper plug valve

Products Range

Design	API6D
Size	1/2" ~12"
Rating	ASME 150 Lb ~300 Lb

Design Feature

- > 2-way or 3-way bore type
- > Optional bore pattern (venturi, regular, short, standard)
- > Injection grease sealed design



Pressure balance lubricated plug valve

Products Range

Design	API6D
Size	1/2" ~36"
Rating	ASME 150 Lb ~2500 Lb

Design Feature

- > Optional bore pattern (venturi, regular, short, standard)
- > Metal to metal seated design
- > Second sealing lubricating system
- > Fire safe design

Lifting type plug valve

Products Range

Design	API6D
Size	2" ~24"
Rating	ASME 150 Lb ~300 Lb

Design Feature

- > Full port or reduced port
- > Frictionless sealing structure
- > Fire safe structure
- > Anti-static structure

